

To: Townsend Conservation Commission
From: Squannacook Greenways, Inc.
Date: February 28, 2022
Subject: REVISED request to review amendment to Orders of Conditions
Squannacook River Rail Trail DEP File Number 308-669

During phase two construction of the Squannacook River Rail Trail, Squannacook Greenways observed that the rail corridor at the back of the Harbor Church parking lot is eroded. The railroad ties have been undermined and the informal footpath from the parking lot to the water's edge has seen a lot of wear.

In February and March, we will be working in this area to construct the rail trail and a path through the Harbor Church parking lot. While working in the area, we propose three additional minor projects:

1. Reinforce the transition where the rail trail will curve upward toward the path through the parking lot. We will use coarse stone to build up and stabilize the base so it will support the stone dust surface.
2. Install an infiltration trench to control any runoff from the parking lot. The trench would be slightly north of the rail corridor centerline and run across most of the width of the parking lot. It would be about two feet wide and two feet deep and filled with coarse stone. The end result will be similar to the infiltration trench along the rail trail parking lot on Depot Street.
3. Improve the canoe launch by reinforcing the existing path with crushed stone or riprap. The finished launch will be no more than 8-10 feet wide and 15-20 feet long. It would be meant for hand-carried boats only, not for boat trailers. It will be more gradual and durable than the existing launch.

The aerial photo on the next page shows the approximate location of the three projects.

We request that the Townsend Conservation Commission review our Order of Conditions issued in July 2019 to determine if the proposed work requires an amendment.

Please feel free to contact me with any questions or concerns.

Respectfully submitted,

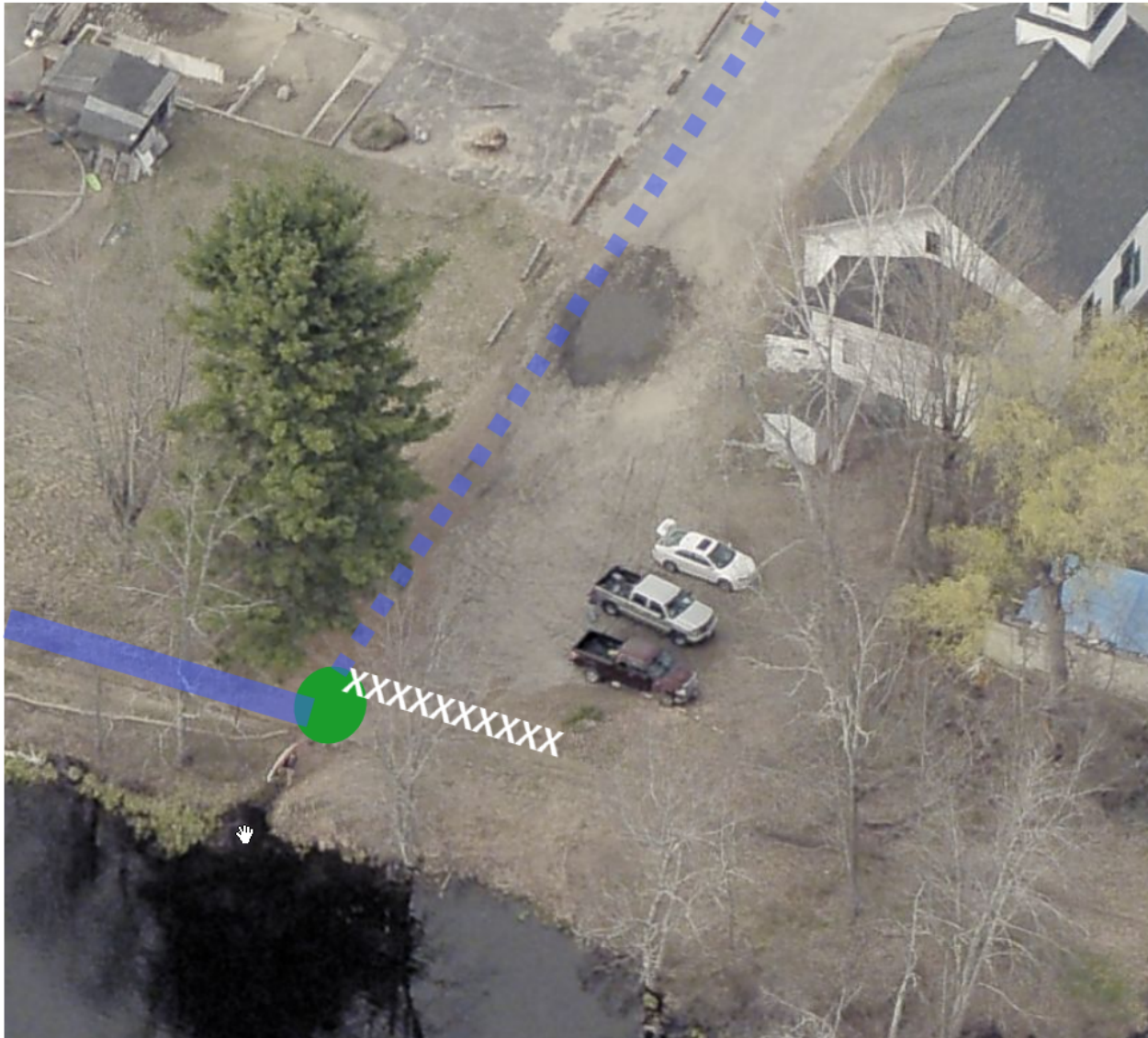
Joan

Joan Wotkowicz

Clerk, Squannacook Greenways, Inc.

joan@sebringdesign.com

413-743-5450 mobile



Annotated Aerial View of the Harbor Church Project Area

The solid blue line shows the segment of rail trail currently under construction. The dotted blue line shows the path of the rail trail detour through the Harbor Church parking lot. The green circle is the area that needs reinforcement.

White Xs mark the location of the proposed infiltration trench. The man with the canoe is on the launch. (All markings are approximate.)